

ATLANTA

DAIRIES

NOW
OPEN



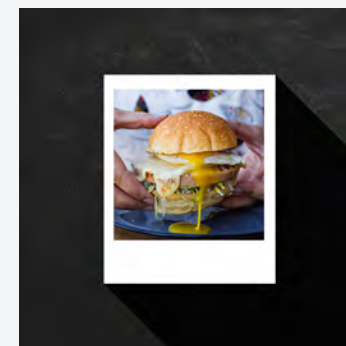
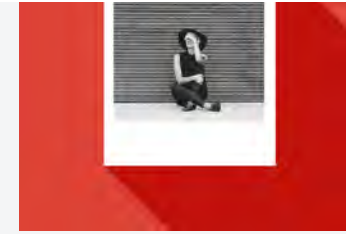
**A PLACE FOR LOVERS OF ATLANTA'S VIBRANT
MAKERS AND CULINARY COMMUNITIES TO
EXPLORE SEVEN DAYS AND NIGHTS A WEEK.**



THE STORY

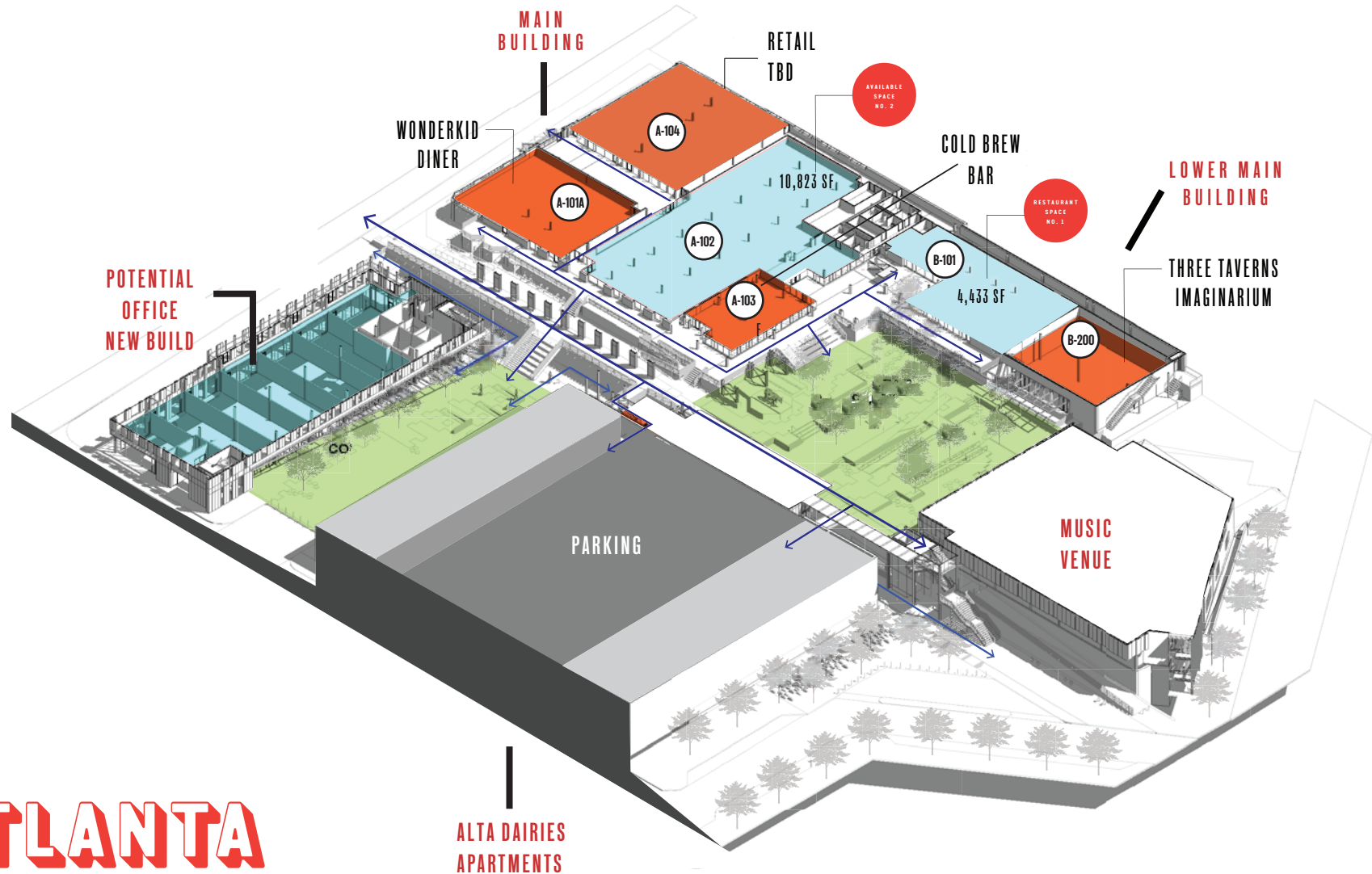
Located just off the Beltline, the Atlanta Dairies redevelopment transforms a historic icon of Reynoldstown into a new center of gravity for Atlanta's vibrant Eastside neighborhoods.

For 60 years, the old ATLANTA DAIRIES cooperative, with its familiar milk carton sign and Art Deco façade, was a hub of commercial activity on Memorial Drive. Rooted in this industrial heritage, Paces Properties' vision for Atlanta Dairies includes a curated mix of specialty shopping, dining, and entertainment venues, all connected by greenspace. In addition to unique office space and apartments, Atlanta Dairies will be a 24/7 gathering place where visitors can come for a meal, stick around for outdoor drinks and games, and discover arts events and live music—again and again.



- LEASED
- AVAILABLE FOR LEASE

RESTAURANT + RETAIL



ATLANTA

DAIRIES

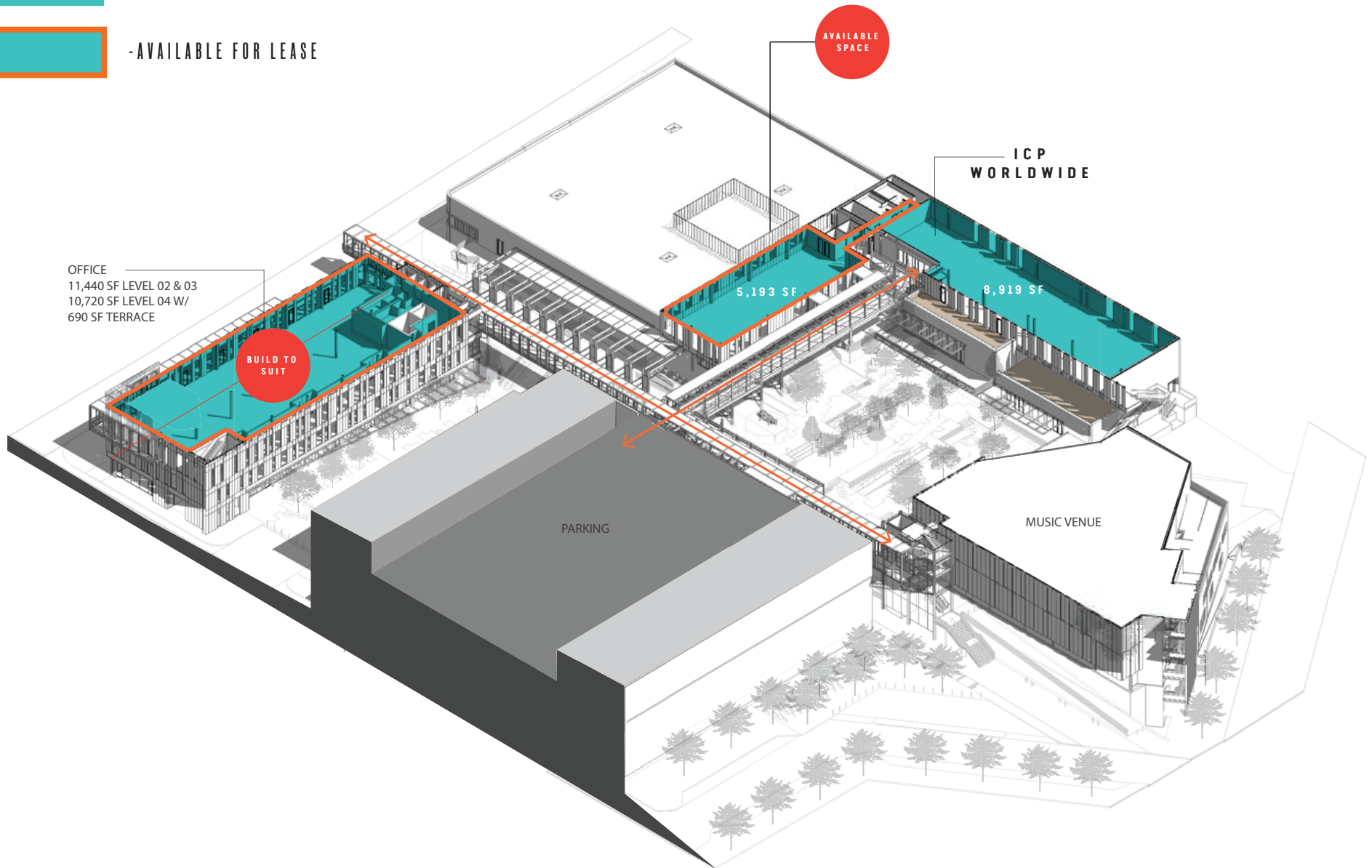
OFFICE



- LEASED



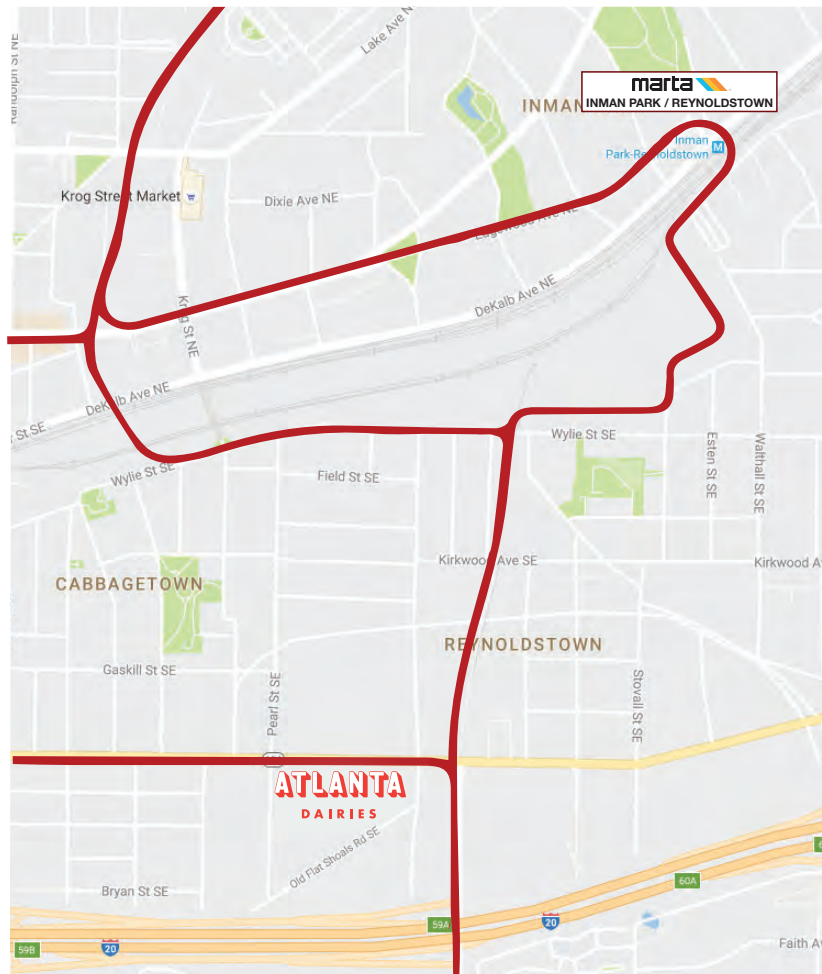
- AVAILABLE FOR LEASE



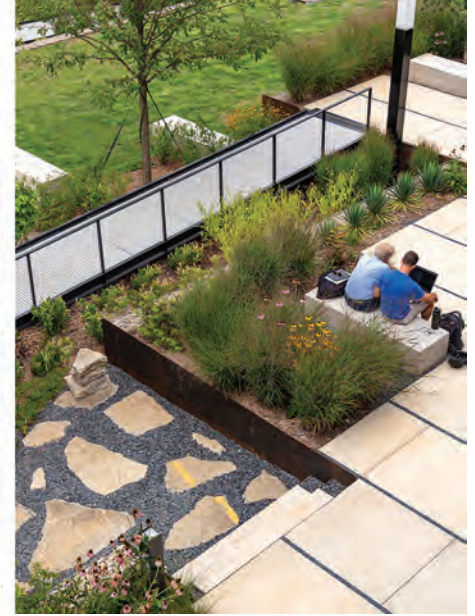
EXISTING DEVELOPMENTS



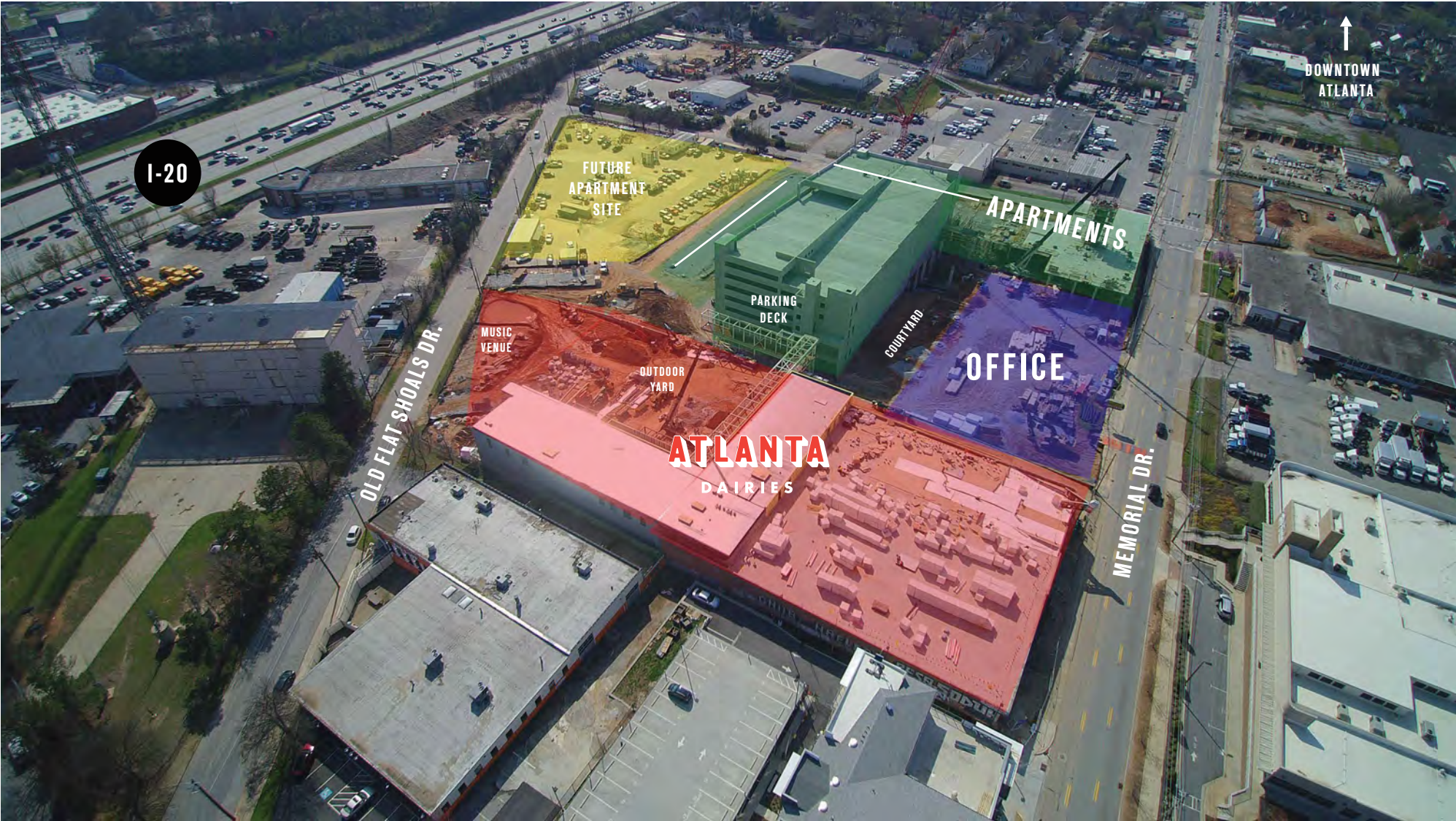
The Atlanta BeltLine is a sustainable redevelopment project that will provide a network of public parks, multi-use trails and transit along a historic 22-mile railroad corridor circling Atlanta and connecting many intown neighborhoods.



THE YARD



AERIAL VIEW



LEASING INFO:



RETAIL + RESTAURANT

SHELBI BODNER

SBODNER@PACESPROPERTIES.COM

404-534-2736



PACES
PROPERTIES



OFFICE

LAWRENCE GELLERSTEDT

LG@SOUTHSOURCE.COM

PAUL TORTORA

PT@SOUTHSOURCE.COM

JOHN NEAL SCOTT

JNS@SOUTHSOURCE.COM

404-218-1691

